



£ 180000

2 Bed Flat, Alpine Court, Basingstoke

Barons Estate Agents are delighted to offer to the market WITH NO ONWARD CHAIN this well presented first floor apartment situated in the popular Alpine Court. Internally the accommodation includes an entrance hall, two bedrooms, bathroom, living room and kitchen. Further benefits include double glazing, gas central heating and communal parking. Viewings to be arranged via the vendor`s sole agents.

Location

Alpine Court benefits from local shops, Stratton Park and is in close proximity to bus routes, and Basingstoke Leisure Complex. This includes a 10 screen cinema, swimming pool, ice rink, bowling, restaurant and Milestones Museum. Basingstoke Town Centre offers Festival Place shopping centre, a mainline train line to London Waterloo and a vast selection of bars, restaurants and eateries.

Location

Tenure

Leasehold:

90 Years Remaining on Lease

Ground Rent: £250 PA

Service Charge: £900PA

Viewing Arrangements

Strictly by appointment with Barons Estate Agents.

🔥 KEY POINTS & FEATURES

🏠 NO ONWARD CHAIN

🏠 Kitchen

🏠 Communal Parking

🏠 1st Floor

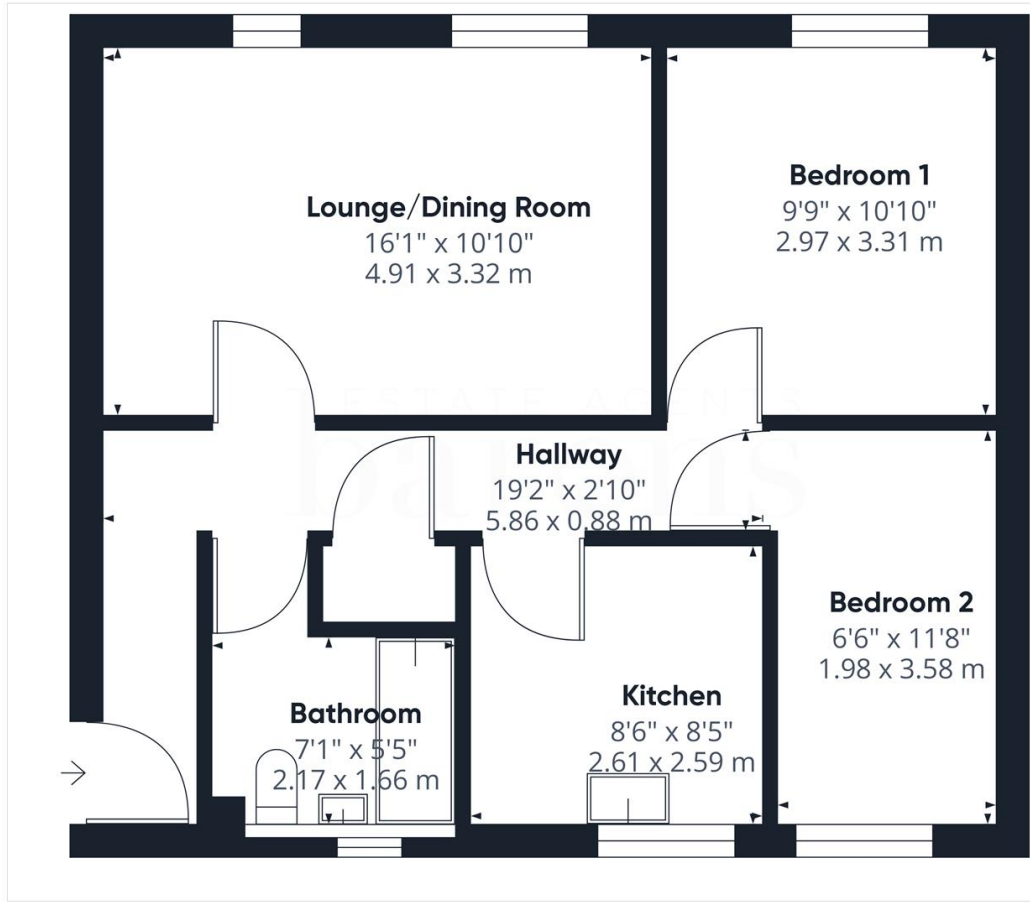
🏠 Bathroom

🏠 Close to Amenities

🏠 2 Bedrooms

🏠 Communal Garden





Approximate total area⁽¹⁾
573.87 ft²
53.31 m²

(1) Excluding balconies and terraces

While every attempt has been made to ensure accuracy, all measurements are approximate, not to scale. This floor plan is for illustrative purposes only.

GIRAFFE360