



£ 79000

1 Bed Retirement Property, Westdeane Court, Basingstoke

Barons Estate Agents are delighted to present this second floor, 1 bedroom over 55s retirement apartment situated in the ever popular Westdeane Court. The accommodation comprises of an entrance hallway leading into a living room with a bay window, kitchen, bedroom and modern shower room. Westdeane Court offers a variety of communal benefits including a lift, recently re-decorated lounge, laundry room, communal gardens and ample parking for property owners and visitors. Offered to the market with NO ONWARD CHAIN, a viewing of this property is strongly advised by the vendor`s sole agents.

Location

Situated in Westdeane Court this property is within easy reach of all of Basingstoke's town centre facilities, including Festival Place, mainline train station, the high street and a wealth of pubs and restaurants. There are also leisure facilities close by including a swimming pool, bowls club and pitch and putt golf. For the cultural side of life, there are two museums and theatres.

Tenure

Leasehold

Approx. 89 years remaining - Lease renews each time the property is sold.

Ground Rent & Service Charge - £303 per month.

Council Tax

Band B

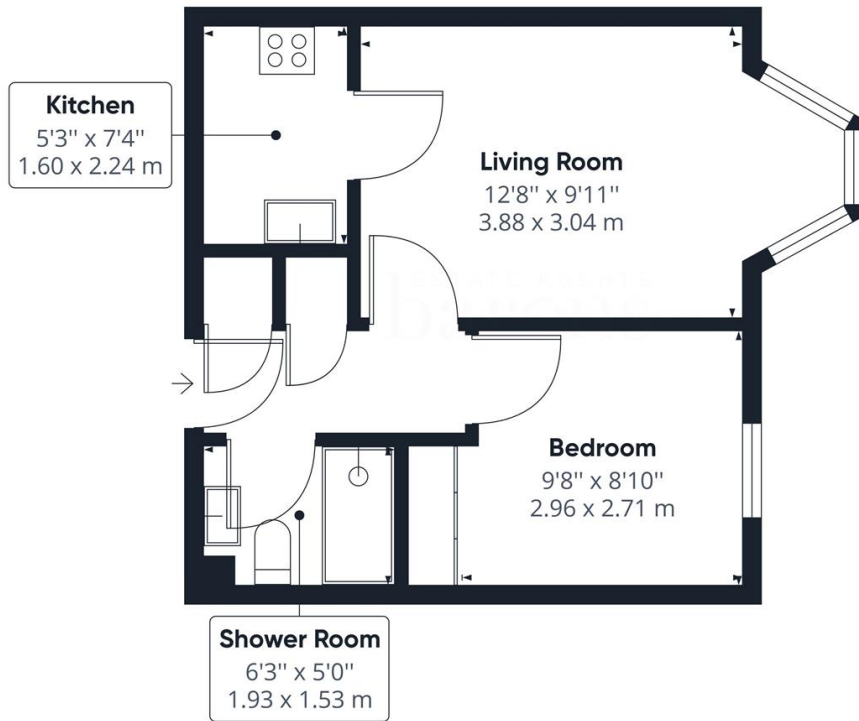
Extra Services

Barons Estate Agents will recommend the services of other businesses and may receive a referral fee in some instances where a buyer or seller uses the services of that company.

🏠 KEY POINTS & FEATURES

- 🏠 Over 55s Retirement Apartment
- 🏠 Kitchen
- 🏠 Communal Lounge
- 🏠 1 Bedroom
- 🏠 Lounge/Dining Room
- 🏠 Communal Gardens
- 🏠 Second Floor
- 🏠 Modern Shower Room
- 🏠 NO ONWARD CHAIN





Approximate total area⁽¹⁾
350.27 ft²
32.54 m²

(1) Excluding balconies and terraces.

While every attempt has been made to ensure accuracy, all measurements are approximate, not to scale. This floor plan is for illustrative purposes only.

GIRAFFE360