



£ 425000

3 Bed House - Link Detached, Maplehurst Chase, Basingstoke

Barons Estate Agents are delighted to offer to the market this 3 bedroom linked detached family home.

The ground floor offers entrance hall, WC, living room, kitchen, dining room and conservatory. The accommodation on the first floor comprises of 3 bedrooms and a family bathroom. The property boasts a private enclosed rear garden with access to the garage as well as a front garden and driveway parking for 2 cars. Other benefits include; gas central heating, double glazed windows, gas central heating and a sought after location. Early viewings are highly recommended.

Location

Maplehurst Chase is situated in one of Basingstoke's most sought after developments, Hatch Warren, which is on the west side of the town centre. Local schools are nearby which include St Marks, Busy Bee Nursery and colleges including BCOT and QMC. Local villages of Dummer and North Waltham are a relatively short drive away which offer country pubs and fantastic rural walks. Basingstoke town provides a wealth of amenities which include Festival Place shopping centre, eateries, bars, pubs and mainline train line to London. The M3 is also accessible from junction 7 giving good access to the South Coast and London.

Tenure

Freehold

Council Tax

Band D

Extra Services

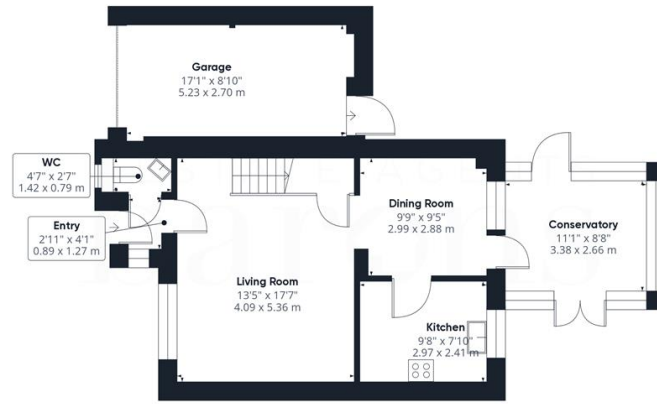
Barons Estate Agents will recommend the services of other businesses and may receive a referral fee in some instances where a buyer or seller uses the services of that company.

▀ KEY POINTS & FEATURES

- ▀ Linked Detached
- ▀ Dining Room
- ▀ Family Bathroom
- ▀ 3 Bedrooms
- ▀ Kitchen
- ▀ Garage & Driveway Parking
- ▀ Lounge
- ▀ Conservatory
- ▀ Sought After Location







Floor 0



Floor 1

Approximate total area⁽¹⁾
1090.07 ft²
101.27 m²

(1) Excluding balconies and terraces

While every attempt has been made to ensure accuracy, all measurements are approximate, not to scale. This floor plan is for illustrative purposes only.

GIRAFFE360