



£ 290000

2 Bed House - Mid Terrace, Queens Road, Basingstoke

Barons Estate Agents are delighted to offer to the market with a complete onward chain, this mid terrace character property situated within close proximity to Basingstoke Town Centre. Internally on the ground floor, the property features a large lounge/dining room and kitchen. Upstairs there are two bedrooms, access to the loft room and a family bathroom. Externally, the property boasts an enclosed rear garden and brick built storage. Additional benefits include gas central heating, double glazing throughout as well as a bonus loft room. An early viewing of this ideal home would be strongly recommended by the vendor's sole agent.

Location

Queens Road is located within half a mile of Basingstoke Town Centre. The excellent leisure facilities of Basingstoke are all within easy reach which include Festival Place, various bars, coffee shops and eateries. The railway station is within close proximity and provides direct access to London Waterloo for commuters (approximately 45 minutes). The M3 motorway provides road access to London and the south. There are well-regarded schools and colleges within the area which include BCOT and QMC.

Tenure

Freehold

Council Tax

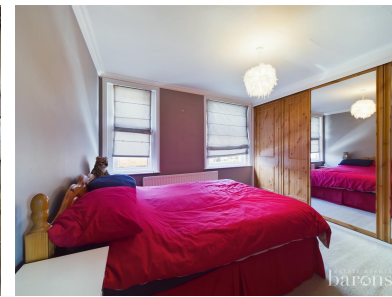
Band C

Extra Services

Barons Estate Agents will recommend the services of other businesses and may receive a referral fee in some instances where a buyer or seller uses the services of that company.

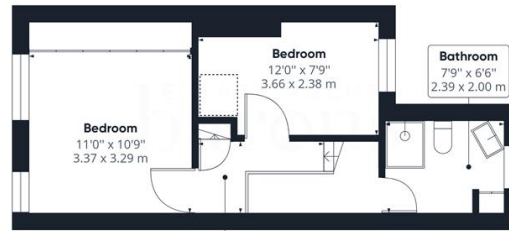
🏠 KEY POINTS & FEATURES

- 🏠 Complete Onward Chain
- 🏠 Lounge/Dining Room
- 🏠 Sought After Location
- 🏠 2 Bedrooms
- 🏠 Kitchen
- 🏠 Town Centre Location
- 🏠 Outside Storage Area
- 🏠 Bonus Room

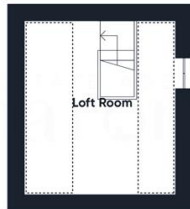




Floor 0 Building 1



Floor 1 Building 1



Floor 2 Building 1



Floor 0 Building 2

Approximate total area⁽¹⁾

842.71 ft²
78.29 m²

Reduced headroom

74.76 ft²
6.95 m²

(1) Excluding balconies and terraces

 Reduced headroom
(below 1.5m/4.92ft)

While every attempt has been made to ensure accuracy, all measurements are approximate, not to scale. This floor plan is for illustrative purposes only.

GIRAFFE360