



£ 400000

3 Bed Bungalow - Link Detached, Vine Tree Close Pound Green, Baughurst, Tadley

Barons Estate Agents are pleased to offer this link detached bungalow in need of modernization and offered with No Onward Chain. The accommodation enjoys an entrance hall, 3 bedrooms, cloak/shower room, lounge, dining room, conservatory, kitchen and family bathroom. To the front of the property there is a good size front garden laid to lawn with dwarf hedging borders, driveway parking and carport leading to garage with hinged doors. The rear garden is enclosed mainly laid to lawn.

Location

Vine Tree Close is situated in an established location in a desirable area to the north of Basingstoke and south of Tadley. There is an abundance of country walks, a local pub and a shop close by with more extensive shopping within 2 miles in the nearby village of Tadley with its traditional parade of shops and super markets. Basingstoke is a short drive away, including the acclaimed `Festival Place` shopping centre, cinemas, retail parks, theatres, M3 access and mainline railway to London Waterloo in 45 minutes. Viewing is recommended. No Onward Chain.

Tenure

Freehold

Council Tax

Tax Band D

Extra Services

Barons Estate Agents will recommend the services of other businesses and may receive a referral fee in some instances where a buyer or seller uses the services of that company.

🏠 KEY POINTS & FEATURES

🏠 Entrance Hall

🏠 Bathroom

🏠 Conservatory

🏠 3 Bedrooms

🏠 Lounge

🏠 Kitchen

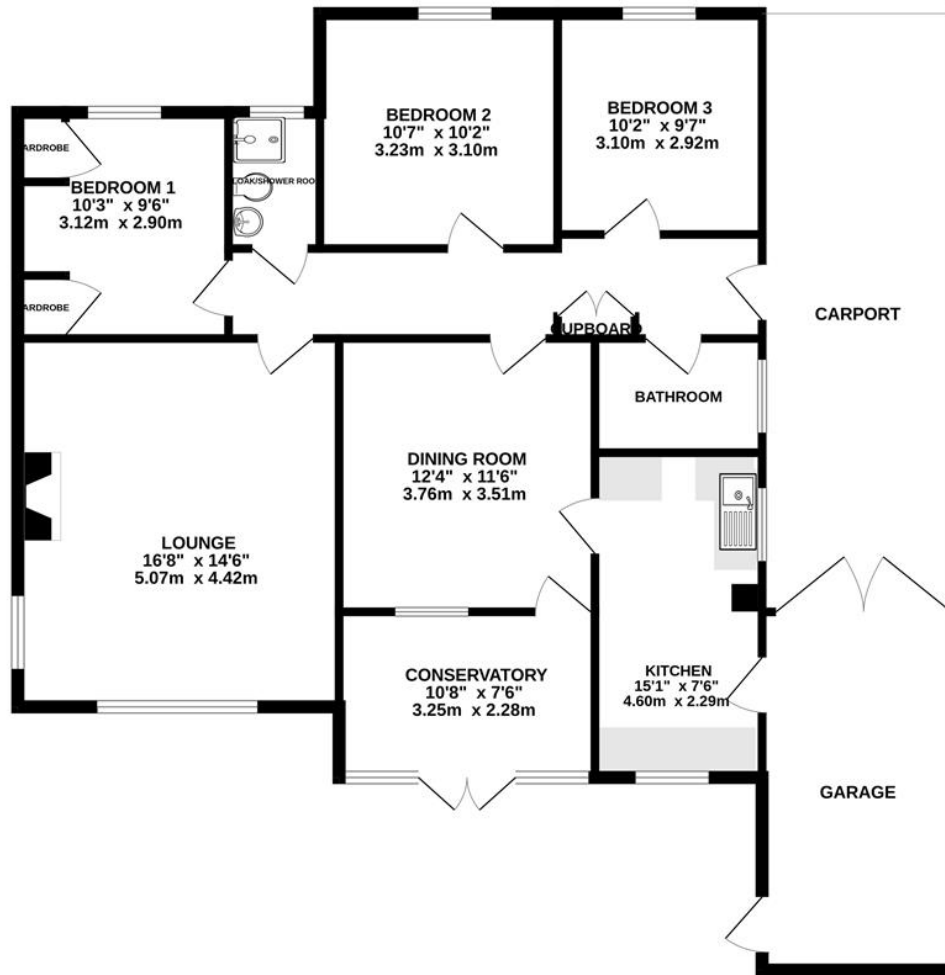
🏠 Cloak/Shower Room

🏠 Dining Room

🏠 Garage



GROUND FLOOR
1416 sq.ft. (131.5 sq.m.) approx.



TOTAL FLOOR AREA : 1416 sq.ft. (131.5 sq.m.) approx.
Measurements are approximate. Not to scale. Illustrative purposes only
Made with Metropix ©2024