



£ 420000

4 Bed House - End Terrace, Sandys Road, South Ham, Basingstoke

Barons Estate Agents are delighted to present this wonderful 4 bedroom end terrace property situated in South Ham. The property comprises of a spacious entrance hallway leading into a lounge, open plan kitchen/dining room with a double doors leading into the garden, a downstairs cloakroom and storage. Upstairs benefits from four double bedrooms, and a modern shower room. Externally the property offers a sunny aspect enclosed garden, an outhouse with power and heating (which could make an ideal gym/workshop/home office), ample driveway parking and a bike store. Additional benefits include gas central heating, double glazing throughout, solar panels and NO ONWARD CHAIN. Viewings of this much sought after property are strongly advised by the vendor`s sole agents.

Location

Sandys Road is positioned in South Ham, offering commuter links via bus, train station and M3 junctions. Morrison's supermarket is easily accessible as are all of Basingstoke town centre's amenities including Festival Place shopping centre and a vast selection of bars and eateries.

Tenure

Freehold

Council Tax

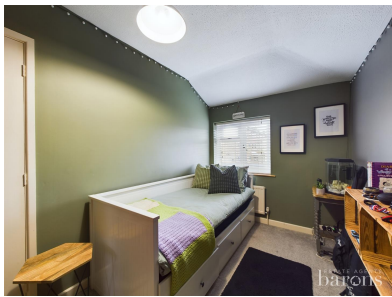
Band B

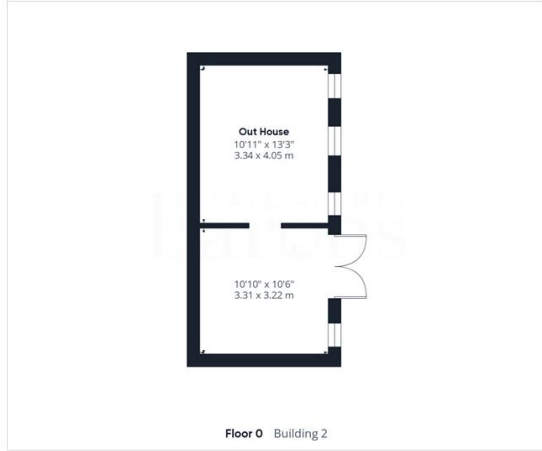
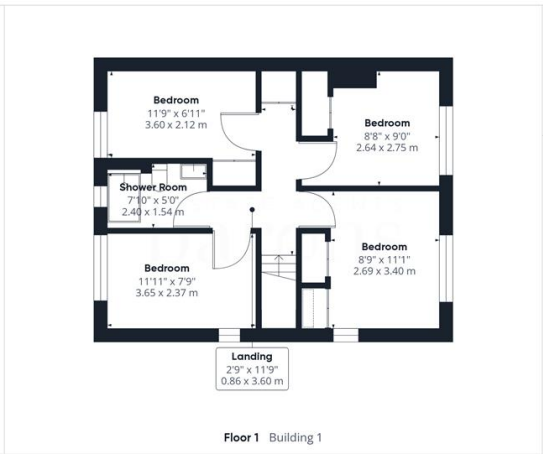
Extra Services

Barons Estate Agents will recommend the services of other businesses and may receive a referral fee in some instances where a buyer or seller uses the services of that company.

▀ KEY POINTS & FEATURES

- ▀ 4 Double Bedrooms
- ▀ Kitchen/Dining Room
- ▀ Separate Out House & Bike Store
- ▀ End of Terrace
- ▀ Modern Shower Room
- ▀ Solar Panels
- ▀ Lounge
- ▀ Driveway Parking
- ▀ NO ONWARD CHAIN





ESTATE AGENTS
barons

Approximate total area⁽¹⁾

1352.91 ft²
125.69 m²

Reduced headroom

1.04 ft²
0.1 m²

(1) Excluding balconies and terraces

Reduced headroom
..... Below 5 ft/1.5 m

While every attempt has been made to ensure accuracy, all measurements are approximate, not to scale. This floor plan is for illustrative purposes only.

Calculations are based on RICS IPMS 3C standard.

GIRAFFE360