



**£ 340000**

0 Bed House, Hogarth Close, Black Dam, Basingstoke

Barons Estate Agents are delighted to present WITH NO ONWARD CHAIN this extended 2 Bedroom Linked Detached Bungalow in a sought after location. Internally the property boasts, a porch, entrance hall, living room, kitchen, bathroom, dining room and 2 bedrooms. Externally the property boasts driveway parking, a garage and rear Garden. Further benefits include gas central heating, double glazing and the property is located within a mile of Basingstoke town centre. An Early viewing is strongly advised by the vendor`s sole agents

## Location

Hogarth Close gives easy access to M3, A30, A303 and A33 along with a main line railway to London Waterloo. Festival Place offers extensive shopping facilities including Marks and Spencers.. There is an abundance of bars and restaurants, two theatres and within a short drive is the Leisure Park providing an ice rink, swimming pool, bowling ally and multi screen cinema. For the keen golfer numerous courses surround the town, as do picturesque walks and village pubs.

## Tenure

Freehold

## Council Tax

Band D

## Extra Services

Barons Estate Agents will recommend the services of other businesses and may receive a referral fee in some instances where a buyer or seller uses the services of that company.

## 🏠 KEY POINTS & FEATURES

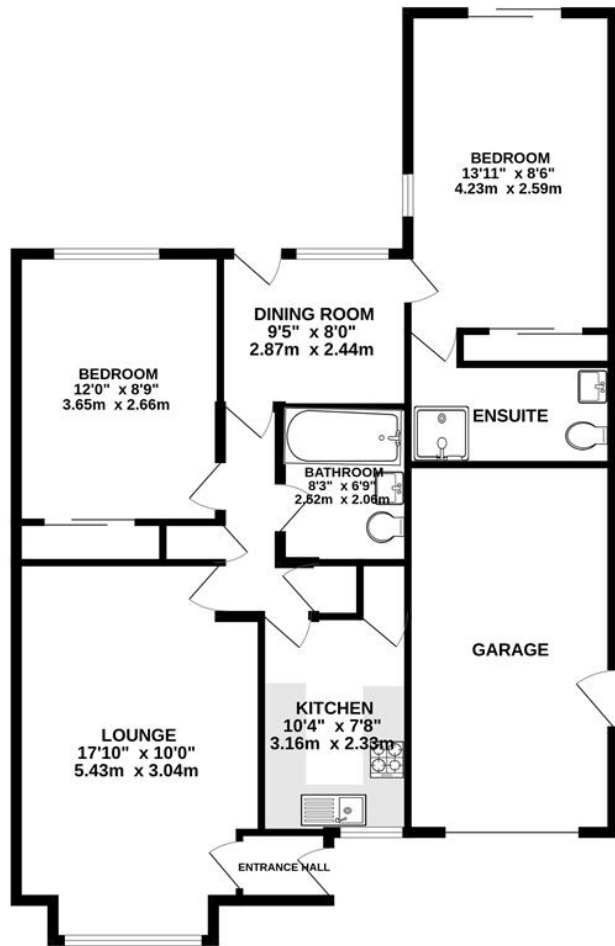
---

- 🏠 NO ONWARD CHAIN
- 🏠 Kitchen
- 🏠 Garage & Driveway Parking
- 🏠 Extended
- 🏠 Lounge
- 🏠 Garden
- 🏠 2 Bedrooms
- 🏠 Dining Room
- 🏠 Sought After Location





GROUND FLOOR  
1151 sq.ft. (107.0 sq.m.) approx.



TOTAL FLOOR AREA : 1151 sq.ft. (107.0 sq.m.) approx.  
Measurements are approximate. Not to scale. Illustrative purposes only  
Made with Metropix ©2024