



£ 260000

4 Bed House - Mid Terrace, Cotswold Close, Buckskin, Basingstoke

Barons Estate Agents are delighted to present this four bedroom, mid terrace family home, situated in a cul de sac location. The ground floor accommodation comprises of an entrance hall, cloakroom/utility, dining room, lounge and kitchen. Upstairs there are four bedrooms, and a family bathroom. Externally, the property boasts an enclosed rear garden, garage with parking in front, and ample communal parking. Additional benefits include gas central heating and double glazing throughout. An early viewing would be strongly advised by the vendor's sole agent.

Location

Cotswold Close benefits from local shops, Stratton Park and is in close proximity to bus routes, and Basingstoke Leisure Complex. This includes a 10 screen cinema, swimming pool, ice rink, bowling, restaurant and Milestones Museum. Basingstoke Town Centre offers Festival Place shopping centre, a mainline train line to London Waterloo and a vast selection of bars, restaurants and eateries.

Local Authority

Basingstoke & Deane Borough Council.

Council Tax

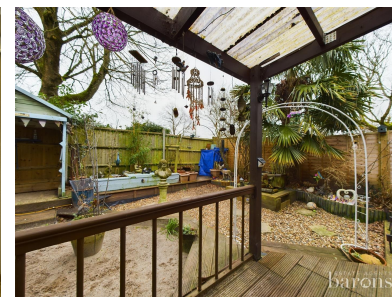
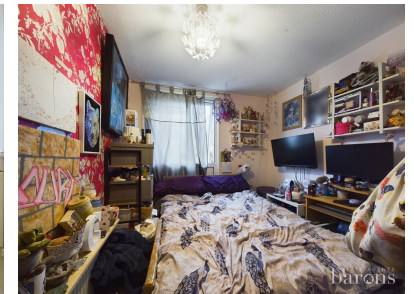
Band C.

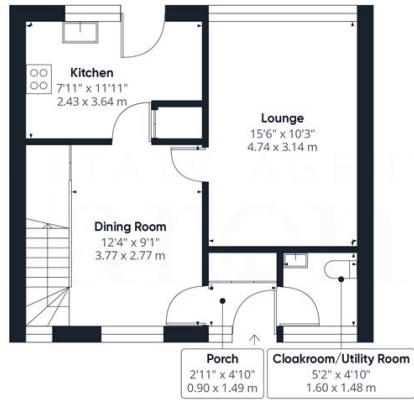
Extra Services

Barons Estate Agents will recommend the services of other businesses and may receive a referral fee in some instances where a buyer or seller uses the services of that company.

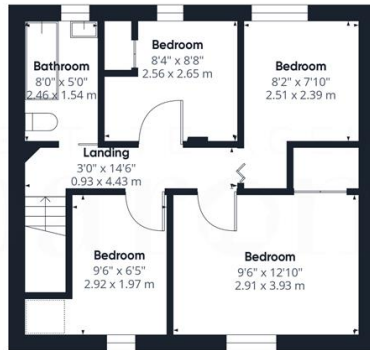
▀ KEY POINTS & FEATURES

- ▀ Mid Terrace Family Home
- ▀ Two Reception Rooms
- ▀ Garage
- ▀ Four Bedrooms
- ▀ Kitchen
- ▀ Gas Central Heating & Double Glazing
- ▀ Family Bathroom & Cloakroom
- ▀ Enclosed Rear Garden
- ▀ Viewing Advised





Floor 0



Floor 1

Approximate total area⁽¹⁾
884.03 ft²
82.13 m²

(1) Excluding balconies and terraces

While every attempt has been made to ensure accuracy, all measurements are approximate, not to scale. This floor plan is for illustrative purposes only.
Calculations are based on RICS IPMS 3C standard.

GIRAFFE360