



£ 635000

3 Bed House - Semi-Detached, Sherfield Green, Sherfield-On-Loddon

Barons Estate Agents are thrilled to present this charming three bedroom semi-detached period cottage, built in 1905. Situated in a peaceful and secluded location, this delightful home is tucked away down a small, no-through lane in the heart of the village of Sherfield-on-Loddon. With its serene atmosphere and stunning views over the village green, the property offers the perfect combination of privacy and tranquillity, while still being within easy reach of the village's amenities and character. Lovingly cared for, this property retains many original character features throughout. On the ground floor, you'll find a welcoming porch, a cosy family room, an open-plan dining room and kitchen with integrated appliances and a double oven, a utility room, and a cloakroom. The property also benefits from a side extension, which creates a spacious lounge. Upstairs, a generous landing leads to three double bedrooms, a large family bathroom, and an ensuite shower room. Externally, the property features an enclosed rear courtyard garden, offering a sunny aspect, along with a front garden and driveway parking. Additional benefits include gas central heating, with a new boiler installed in February 2025, and double glazing throughout. Properties of this nature are a rare find, and early viewing is highly recommended by the vendor's sole agent.

Location

The property is situated in a Conservation Area close to the centre of Sherfield-On-Loddon. The village enjoys local public houses, restaurant, village store and village pond. There are many walks close by along with many historical sites and local golf club. The village is ideally situated for access to Reading and Basingstoke both offering a huge array of shopping facilities, M3, M4 motorways and mainline rail links to London Waterloo. A short drive to the next village of Bramley offers again pubs and a bakery and railway station giving links to Reading and onto London Paddington.

Local Authority

Basingstoke & Deane Borough Council

Tenure

Freehold

Extra Services

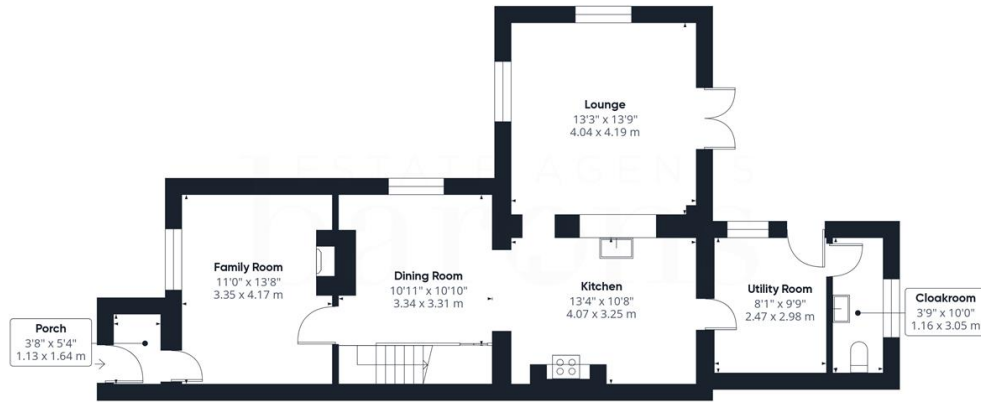
Barons Estate Agents will recommend the services of other businesses and may receive a referral fee in some instances where a buyer or seller uses the services of that company.

🏡 KEY POINTS & FEATURES

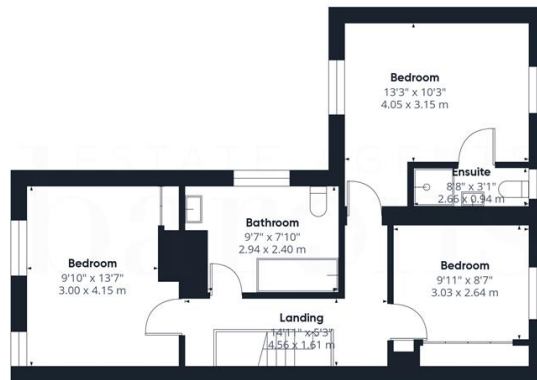
- | | | |
|--|-------------------------|----------------------------|
| 🏡 Semi Detached Period Cottage Built in 1905 | 🏡 Three Double Bedrooms | 🏡 Village Location |
| 🏡 Family Bathroom & Ensuite | 🏡 Lounge & Family Room | 🏡 Utility Room & Cloakroom |
| 🏡 Open Plan Kitchen/Dining Room | 🏡 Front & Rear Gardens | 🏡 Driveway Parking |







Floor 0



Floor 1

Approximate total area[®]
1353.03 ft²
125.7 m²

(1) Excluding balconies and terraces

While every attempt has been made to ensure accuracy, all measurements are approximate, not to scale. This floor plan is for illustrative purposes only.

Calculations were based on RICS IPMS 3C standard. Please note that calculations were adjusted by a third party and therefore may not comply with RICS IPMS 3C.

GIRAFFE360