



£ 300000

2 Bed House - Mid Terrace, Forsythia Walk, Oakridge Village, Basingstoke

Barons Estate Agents are delighted to present this two bedroom, mid terrace property situated in Oakridge Village. The property has been lovingly maintained, and is presented to the market with NO ONWARD CHAIN. The internal accommodation comprises of an entrance hallway, lounge, cloakroom and kitchen/dining room on the ground floor. Upstairs there are two double bedrooms, an ensuite and a family bathroom. Externally, the property features two allocated parking spaces and an enclosed rear garden. Additional benefits include gas central heating and double glazing. A viewing would be strongly advised by the vendor's sole agent.

Location

Forsythia Walk is situated within walking distance of the Town Centre offering easy access to the wealth of facilities and amenities available in Basingstoke. These include the Mainline train line to London Waterloo in 45 minutes, Festival place shopping centre and a host of bars, clubs and eateries. The M3 can be accessed with relative ease and good bus services support Basingstoke's transport links.

Tenure

Freehold

Council Tax

Band C

Extra Services

Barons Estate Agents will recommend the services of other businesses and may receive a referral fee in some instances where a buyer or seller uses the services of that company.

▀ KEY POINTS & FEATURES

- ▀ Mid Terrace Home
- ▀ Lounge
- ▀ Two Allocated Parking Spaces
- ▀ Two Double Bedrooms
- ▀ Kitchen/Dining Room
- ▀ Enclosed Rear Garden
- ▀ Family Bathroom & Ensuite
- ▀ Cloakroom
- ▀ NO ONWARD CHAIN



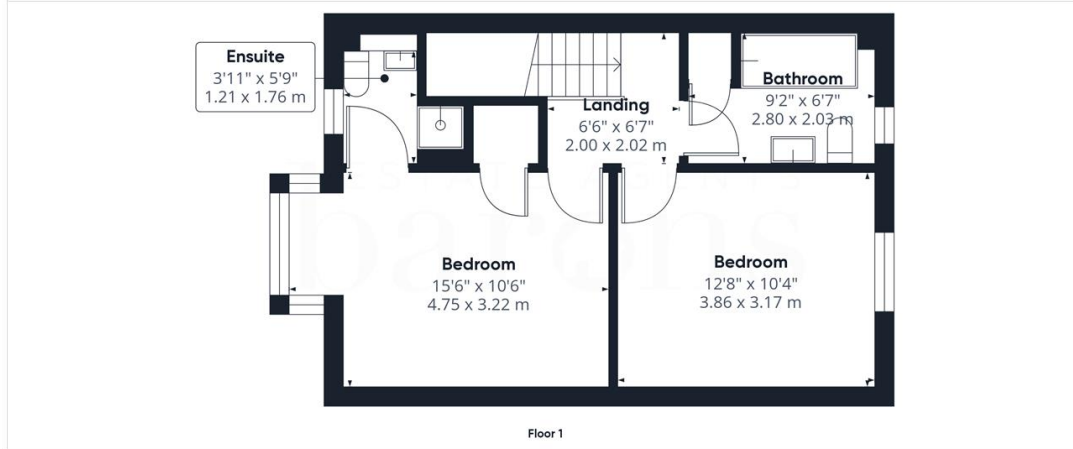
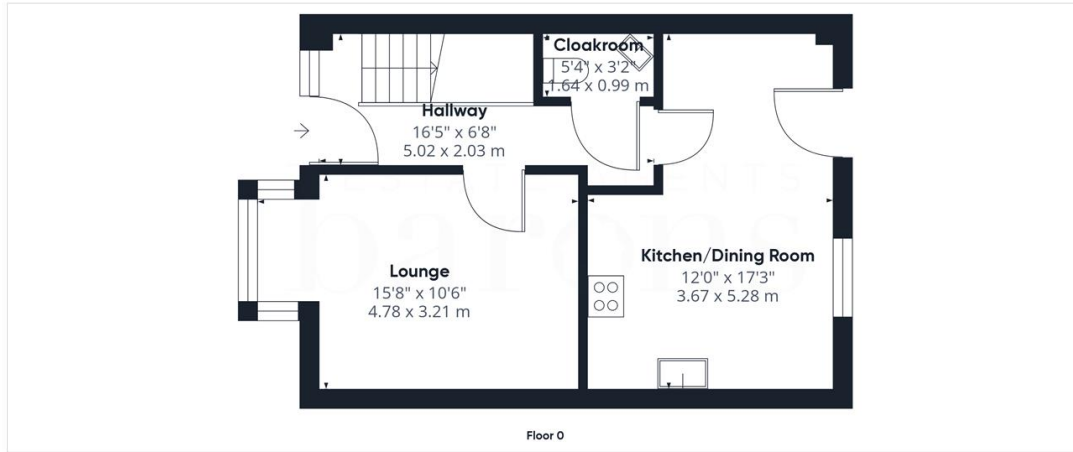


t: 01256 840111

f: 01256 843177 4

e: sales@baronstateagents.co.uk

w: <https://baronstateagents.co.uk>



Approximate total area⁽¹⁾
 860.13 ft²
 79.91 m²

(1) Excluding balconies and terraces

While every attempt has been made to ensure accuracy, all measurements are approximate, not to scale. This floor plan is for illustrative purposes only.

Calculations are based on RICS IPMS 3C standard.

GIRAFFE360

