



£ 140000

1 Bed Maisonette, Selby Walk, Basingstoke

Barons Estate Agents are pleased to bring to the market this ideal first time buyer or investment. The property enjoys a small enclosed garden to the front with decking. There is a double glazed door to the hall, shower room, bedroom and open plan lounge / kitchen. The property benefits from double glazing, gas radiator central heating and No Onward Chain. Viewing recommended by the owner`s agent.

Location

Selby Walk is situated to the North East of the town centre and offers good access to local schools and convenience shops. More extensive shopping is a short drive away at Chineham Shopping Centre and Festival Place. The A33 and M3 are easily accessible along with mainline railway to London Waterloo. For the outdoor person there are country walks, golf courses, National Trust Properties, eateries and pubs abound. Basingstoke hospital is approximately 1 mile from the property.

Tenure

Leasehold

107 years remaining.

Ground Rent and Building Insurance £32 per month.

Council Tax

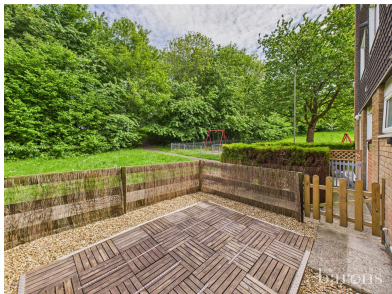
Band A

Extra Services

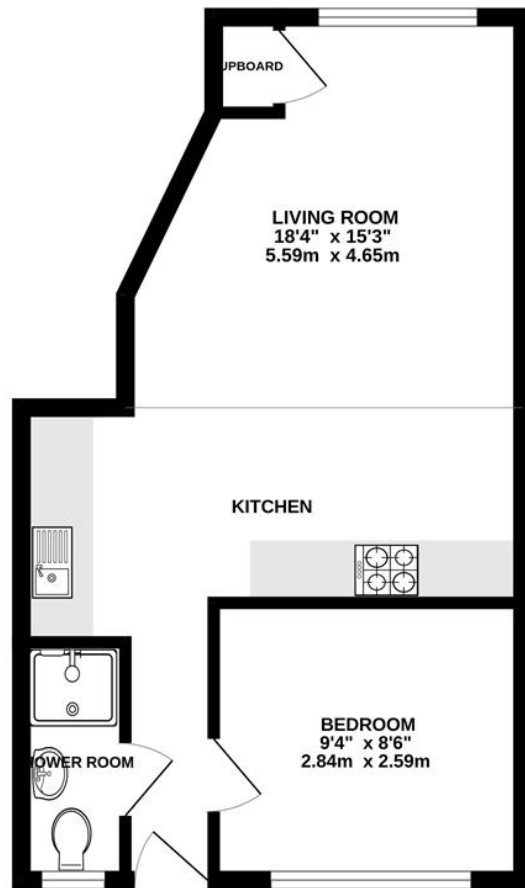
Barons Estate Agents will recommend the services of other businesses and may receive a referral fee in some instances where a buyer or seller uses the services of that company.

🏠 KEY POINTS & FEATURES

- | | | |
|-------------------------|--------------------|--------------------|
| 🏠 Entrance Hall | 🏠 Bedroom | 🏠 Shower Room |
| 🏠 Lounge / Kitchen | 🏠 Double Glazed | 🏠 Radiator Heating |
| 🏠 Enclosed Front Garden | 🏠 Communal Parking | 🏠 No Onward Chain |



GROUND FLOOR



Measurements are approximate. Not to scale. Illustrative purposes only.
Made with Metropix ©2025

Energy Efficiency Rating

	Current	Potential
Very energy efficient - lower running costs		
(92 plus) A		
(81-91) B		
(69-80) C	77	78
(55-68) D		
(39-54) E		
(21-38) F		
(1-20) G		
Not energy efficient - higher running costs		
England & Wales	EU Directive 2002/91/EC	