



£ 275000

3 Bed House - End Terrace, Tweedsmuir Close, Basingstoke

Barons Estate Agents are pleased to bring to the market this 3 bedroom end of terrace family home. The ground floor benefits from an entrance hall, cloak/utility room, dining room, lounge and a kitchen. The first floor has 3 bedrooms, re fitted bathroom and separate w.c. To the front of the property there is a gravelled area and path leading to the front door. The rear garden has a pergola over a BBQ area, further gravelled area for sitting and relaxing, area of lawn, shed and rear access. There is communal parking to the side. No Onward Chain

Location

Tweedsmuir Close benefits from local shops, Stratton Park and is in close proximity to bus routes, and Basingstoke Leisure Complex. This includes a 10 screen cinema, swimming pool, ice rink, bowling, restaurant and Milestones Museum. Basingstoke Town Centre offers Festival Place shopping centre, a mainline train line to London Waterloo and a vast selection of bars, restaurants and eateries.

Tenure

Freehold

Council Tax

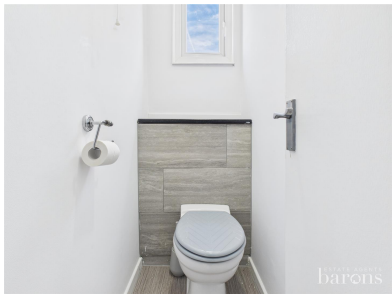
Band B

Extra Services

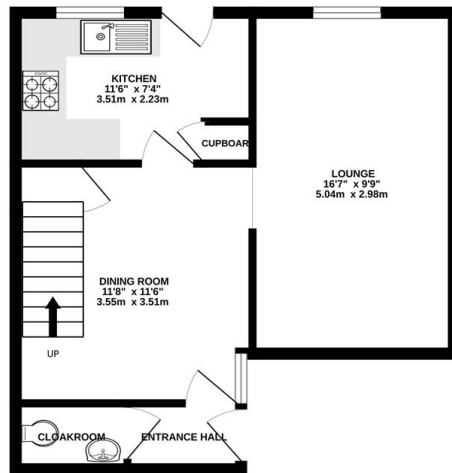
Barons Estate Agents will recommend the services of other businesses and may receive a referral fee in some instances where a buyer or seller uses the services of that company.

🏠 KEY POINTS & FEATURES

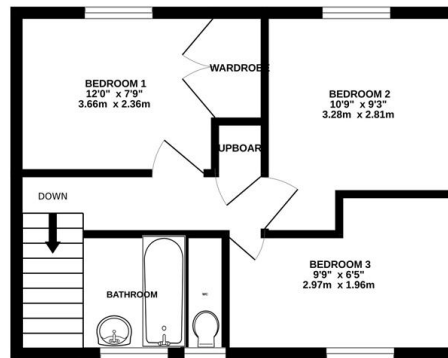
- | | | |
|-----------------|----------------------|---------------------------|
| 🏠 3 Bedrooms | 🏠 Re Fitted Bathroom | 🏠 Separate Re fitted W.C. |
| 🏠 Entrance Hall | 🏠 Dining Room | 🏠 Lounge |
| 🏠 Kitchen | 🏠 Radiators | 🏠 Garden |



GROUND FLOOR
414 sq.ft. (38.4 sq.m.) approx.



1ST FLOOR
352 sq.ft. (32.7 sq.m.) approx.



TOTAL FLOOR AREA: 766 sq.ft. (71.2 sq.m.) approx.
Measurements are approximate. Not to scale. Illustrative purposes only
Made with Metropix ©2025