



£ 550000

4 Bed House - Detached, Highwood Ridge, Basingstoke

Barons Estate Agents are pleased to bring to the market this family home situated at the head of a close. The accommodation to the first floor comprises of a master bedroom with refitted ensuite, 3 further bedroom and a refitted family bathroom. The ground floor enjoys an entrance hall, cloakroom, lounge, family room, kitchen, dining room and a utility room. To the front of the property there is parking for 2 cars and a garage along with side access leading to the rear garden. The rear garden is enclosed and enjoys a full width patio, an area of lawn, flower beds and a good sized shed.

Location

Highwood Ridge is situated on the popular Hatch Warren development. Hatch Warren benefits from amenities including St Marks C of E School, Busy Bee Nursery and a Retail Park which includes Sainsburys Super Store, Argos, and Pets At Home. For the keen shopper Festival Place offers more extensive shopping facilities including Marks & Spencer and Next. The town offers an abundance of eateries, pubs, and two theatres. A Leisure Park is close by offering ice skating, bowling, a swimming pool, and a pitch and putt.

Tenure

Freehold

Council Tax

Band F

Extra Services

Barons Estate Agents will recommend the services of other businesses and may receive a referral fee in some instances where a buyer or seller uses the services of that company.

🏠 KEY POINTS & FEATURES

🏠 4 Bedrooms

🏠 Lounge

🏠 Utility Room

🏠 2 Bathrooms Refitted

🏠 Dining Room

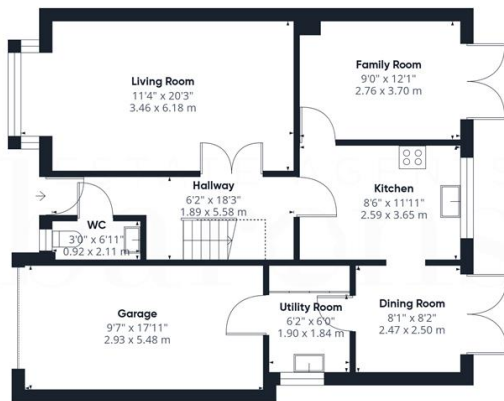
🏠 Cloakroom

🏠 Entrance Hall

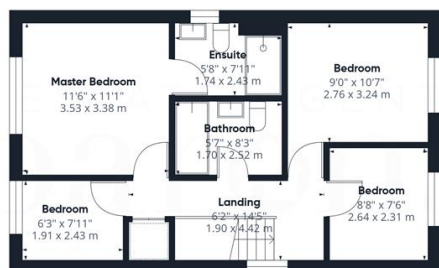
🏠 Family Room

🏠 Garage





Floor 0



Floor 1

ESTATE AGENTS
barons

Approximate total area⁽¹⁾

1334 ft²

124 m²

Reduced headroom

15 ft²

1.4 m²

(1) Excluding balconies and terraces

Reduced headroom:

..... Below 5 ft/1.5 m

Calculations reference the RICS IPMS 3C standard. Measurements are approximate and not to scale. This floor plan is intended for illustration only.

GIRAFFE360