



£ 125000

1 Bed Retirement Property, Westdeane Court, Basingstoke

Barons Estate Agents are delighted to present this ground floor, 1 bedroom over 55s retirement apartment situated in the ever popular Westdeane Court. The accommodation comprises of an entrance hallway leading into a living room with a bay window, kitchen/dining room, bedroom and modern shower room. Westdeane Court offers a variety of communal benefits including a lift, recently re-decorated lounge, laundry room, communal gardens and ample parking for property owners and visitors. Offered to the market with NO ONWARD CHAIN, a viewing of this property is strongly advised by the vendor`s sole agents.

Location

Situated in Westdeane Court this property is within easy reach of all of Basingstoke's town centre facilities, including Festival Place, mainline train station, the high street and a wealth of pubs and restaurants. There are also leisure facilities close by including a swimming pool, bowls club and pitch and putt golf. For the cultural side of life, there are two museums and theatres.

Tenure

Leasehold

Approx. years remaining - Lease renews each time the property is sold.

Ground Rent & Service Charge £267.55 p/m.

Council Tax

Band C

Extra Services

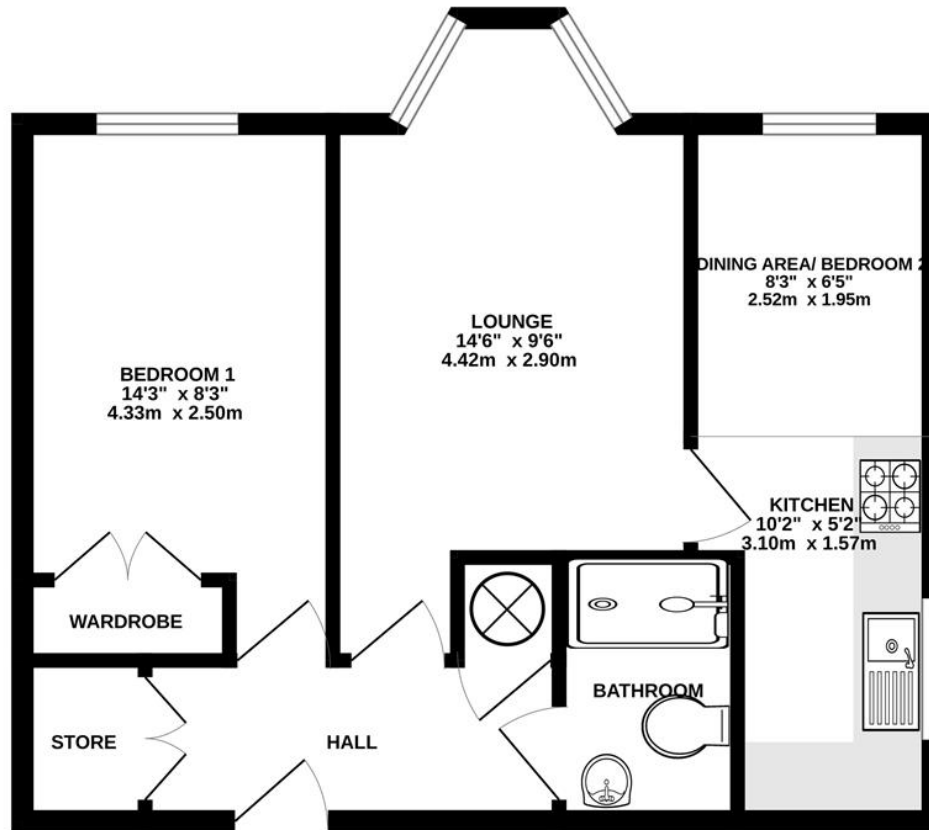
Barons Estate Agents will recommend the services of other businesses and may receive a referral fee in some instances where a buyer or seller uses the services of that company.

🏠 KEY POINTS & FEATURES

- | | | |
|-------------------------------|----------------|--------------------------|
| 🏠 Entrance Hall | 🏠 Bedroom | 🏠 Lounge |
| 🏠 Kitchen / Dining Room | 🏠 Shower Room | 🏠 Communal Entrance Hall |
| 🏠 Communal Lounge and Kitchen | 🏠 Laundry Room | 🏠 Communal Gardens |



GROUND FLOOR
458 sq.ft. (42.5 sq.m.) approx.



TOTAL FLOOR AREA : 458 sq.ft. (42.5 sq.m.) approx.
Measurements are approximate. Not to scale. Illustrative purposes only
Made with Metropix ©2025