



£ 325000

3 Bed House - Mid Terrace, Lennon Way, Basingstoke

Barons Estate Agents are delighted to present to the market this three bedroom, mid-terrace family home, situated in a cul de sac location. The ground floor offers an entrance hall, lounge/dining room and kitchen. The first floor offers 3 well proportioned bedrooms and family bathroom. Externally the property offer a front and rear garden as well as a garage, 1 allocated parking space to the rear as well as the ability to park on the road. Further benefits include gas central heating and double glazing. An early viewing is highly recommended by the vendors sole agent.

Location

Lennon Way is situated to the south/west of the town centre and gives access to junction 6 and 7 of the M3. Mainline railway is within a short drive with direct link to London Waterloo. Retail shopping parks are close to hand along with more extensive shopping in the acclaimed Festival Place with its diverse mix of shops and restaurants. The Anvil and Haymarket Theatres along with the multi screen cinema offer further entertainment.

Tenure

Freehold

Council Tax

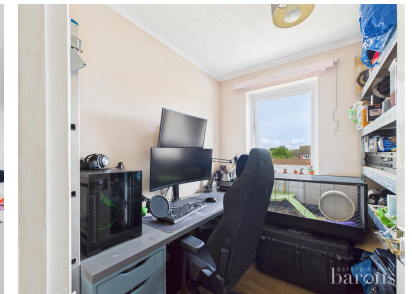
Band C

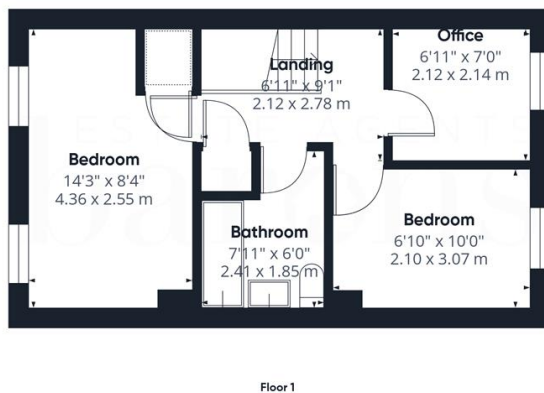
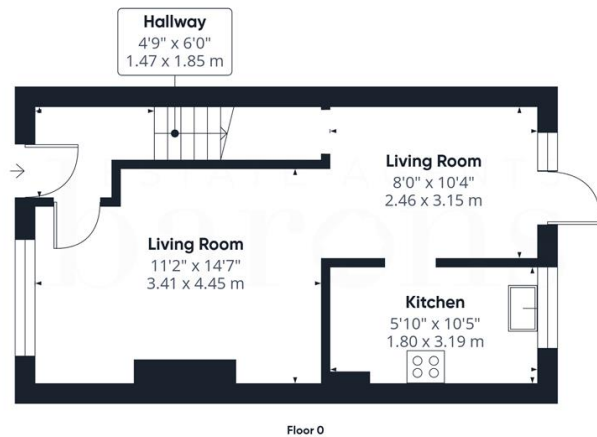
Extra Services

Barons Estate Agents will recommend the services of other businesses and may receive a referral fee in some instances where a buyer or seller uses the services of that company.

🏡 KEY POINTS & FEATURES

- | | | |
|------------------|-------------------------|---------------------------|
| 🏡 Three Bedrooms | 🏡 Mid Terrace | 🏡 Lounge/Dining Room |
| 🏡 Kitchen | 🏡 Front & Rear Gardens | 🏡 Allocated Parking Space |
| 🏡 Garage | 🏡 Sought After Location | |





ESTATE AGENTS
barons

Approximate total area⁽¹⁾
660 ft²
61.3 m²

(1) Excluding balconies and terraces

Calculations reference the RICS IPMS 3C standard. Measurements are approximate and not to scale. This floor plan is intended for illustration only.

GIRAFFE360