



£ 325000

3 Bed House - Mid Terrace, Jersey Close, Basingstoke

Barons Estate Agents are delighted to present this, in our opinion, immaculately presented 3 bedroom mid terrace family home. The accommodation has been superbly improved by the current owners and includes a hallway, utility room, cloakroom, lounge/dining room and refitted kitchen. Upstairs the property offers 3 well proportioned bedrooms, refitted 4 piece family bathroom. Externally the property benefits from a garden with path to the front door. The rear garden is enclosed and well maintained with mature shrubs. Further benefits include: gas central heating, double glazing and an abundance of communal parking. Early viewings of this excellent property are strongly advised by the vendor`s sole agents.

Location

Jersey Close is situated to the North East of the town centre and offers good access to local schools and convenience shops. More extensive shopping is a short drive away at Chineham Shopping Centre and Town Centre Festival Place. The A33 and M3 are easily accessible along with mainline railway to London Waterloo in 45 minutes. For the outdoor person there are country walks, golf courses, National Trust Properties, eateries and pubs abound.

Local Authority

Basingstoke and Deane Borough Council

Council Tax

Tax Band C

Extra Services

Barons Estate Agents will recommend the services of other businesses and may receive a referral fee in some instances where a buyer or seller uses the services of that company.

🏠 KEY POINTS & FEATURES

🏠 3 Bedrooms

🏠 Cloakroom

🏠 Re Fitted Kitchen

🏠 4 Piece Bathroom

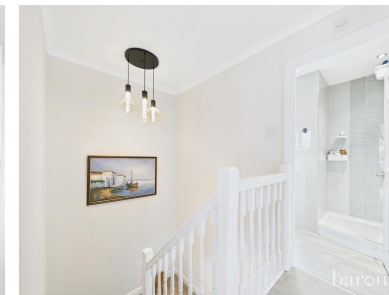
🏠 Utility Room

🏠 Double Glazing

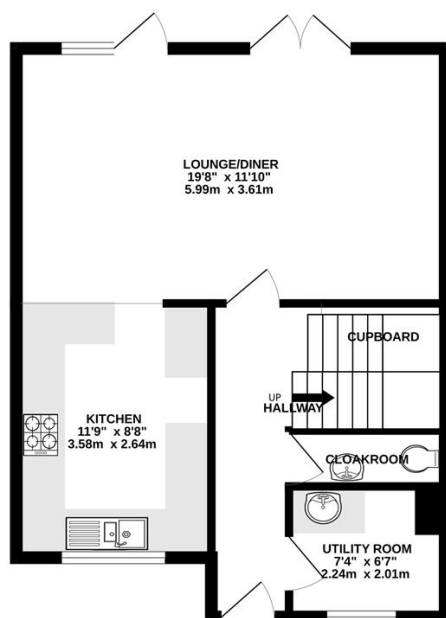
🏠 Entrance Hall

🏠 Lounge/Dining Room

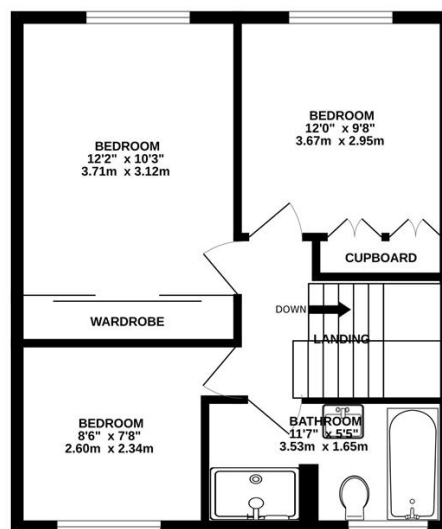
🏠 Garden



GROUND FLOOR



1ST FLOOR



Measurements are approximate. Not to scale. Illustrative purposes only
Made with Metropix ©2025