



£ 675000

4 Bed House - Detached, Moorhams Avenue, Basingstoke

Barons Estate Agents are proud to offer this extended family home nestled in a cul de sac. The ground floor benefits from an entrance lobby, entrance hall, lounge, dining room, family room, kitchen breakfast room, utility room, cloakroom. The first floor benefits from a master bedroom and en suite bathroom, 3 further bedrooms and a family bathroom. Outside there is a driveway with ample parking and double width garage with electric door, heating, light and power. There are 2 side gates to access the rear garden which has been landscaped to offer a patio, lawned area, flower beds, and seclusion. There is a further area to the rear of the garage with a large shed with power. Viewing is strongly recommended for this spacious family home.

Location

Moorhams Avenue is situated on the popular Hatch Warren development. Hatch Warren benefits from amenities including St Marks C of E School, Busy Bee Nursery and a Retail Park which includes Sainsburys Super Store, Argos, and Pets At Home. For the keen shopper Festival Place offers more extensive shopping facilities including Marks & Spencer and Next. The town offers an abundance of eateries, pubs, and two theatres. A Leisure Park is close by offering ice skating, bowling, a swimming pool, and a pitch and putt. Local bus services run regularly, M3 access is close by and mainline railway to London Waterloo is but a short drive.

Tenure

Freehold

Council Tax

Tax Band F

Extra Services

Barons Estate Agents will recommend the services of other businesses and may receive a referral fee in some instances where a

buyer or seller uses the services of that company.

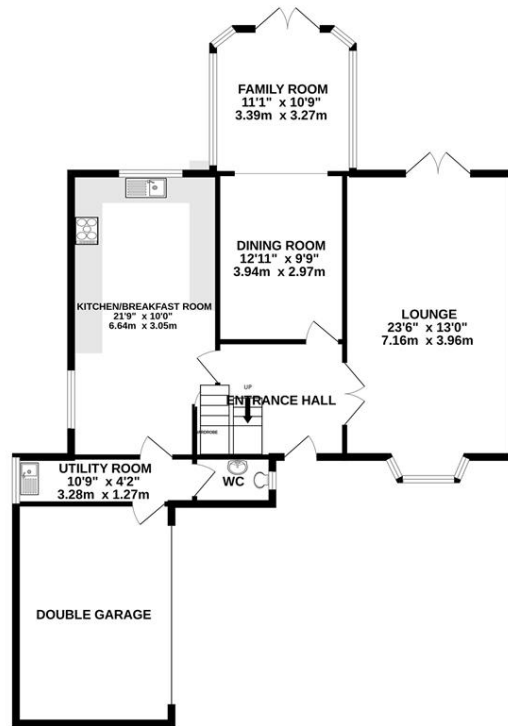
🏠 KEY POINTS & FEATURES

- | | | |
|---------------------|--------------------------|--------------------|
| 🏠 4 Bedrooms | 🏠 2 Bathrooms | 🏠 Cloakroom |
| 🏠 2 Reception Rooms | 🏠 Kitchen Breakfast Room | 🏠 Radiator Heating |
| 🏠 Double Glazed | 🏠 Garden | 🏠 Double Garage |

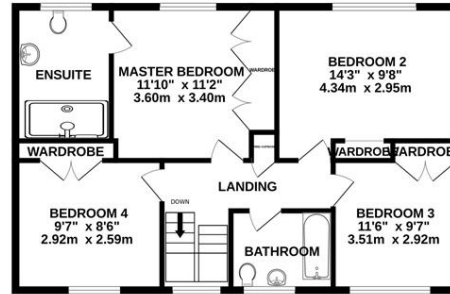




GROUND FLOOR
1139 sq.ft. (105.8 sq.m.) approx.



1ST FLOOR
740 sq.ft. (68.8 sq.m.) approx.



TOTAL FLOOR AREA: 1879 sq.ft. (174.5 sq.m.) approx.
Measurements are approximate. Not to scale. Illustrative purposes only
Made with Metropix ©2025