



£ 550000

3 Bed House - Detached, Portacre Rise, Basingstoke

Barons Estate Agents are delighted to offer to the market this rarely available 3 bedroom detached family home situated within 1 mile of Basingstoke Town Centre. On the ground floor the property offers a lounge, conservatory, kitchen/breakfast room, dining room and WC. The first floor boasts 3 double bedrooms and a 4 piece family bathroom. Externally the property offers driveway parking for a number of cars, garage and a non over looked rear garden. Further benefits include gas central heating and double glazing. An early viewing is highly recommended by the owners sole agent.

Location

Portacre Rise is situated in popular Kings Furlong area. The property is situated ideally for local schooling, Basingstoke College of Technology and local shops. Basingstoke town centre is situated within a short walk offering Festival Place shopping centre, with mainline railway access to London Waterloo in 45 minutes. With access to the A30, A303 and M3 motorway the property offers all the benefits of modern day living.

Tenure

Freehold

Council Tax

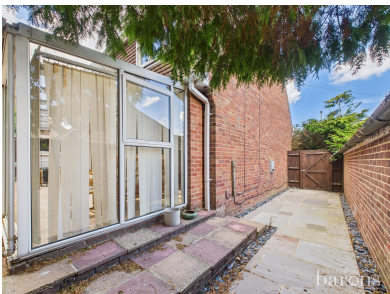
Band E

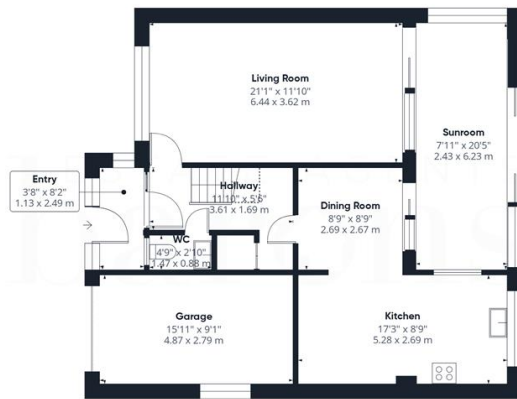
Extra Services

Barons Estate Agents will recommend the services of other businesses and may receive a referral fee in some instances where a buyer or seller uses the services of that company.

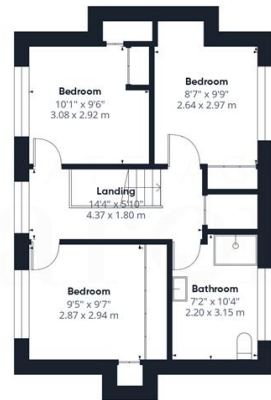
🏠 KEY POINTS & FEATURES

- | | | |
|-----------------------------|--------------------------|--------------------------------|
| 🏠 Rarely Available | 🏠 Detached | 🏠 3 Bedrooms |
| 🏠 3 Reception Rooms | 🏠 Kitchen/Breakfast Room | 🏠 Private Enclosed Rear Garden |
| 🏠 Driveway Parking & Garage | 🏠 Sought After Location | 🏠 Close to Town Centre |





Floor 0



Floor 1

ESTATE AGENTS
barons

Approximate total area⁽¹⁾

1395 ft²
129.6 m²

Reduced headroom

15 ft²
1.4 m²

(1) Excluding balconies and terraces

Reduced headroom:
..... Below 5 ft/1.5 m

Calculations reference the RICS IPMS 3C standard. Measurements are approximate and not to scale. This floor plan is intended for illustration only.

GIRAFFE360